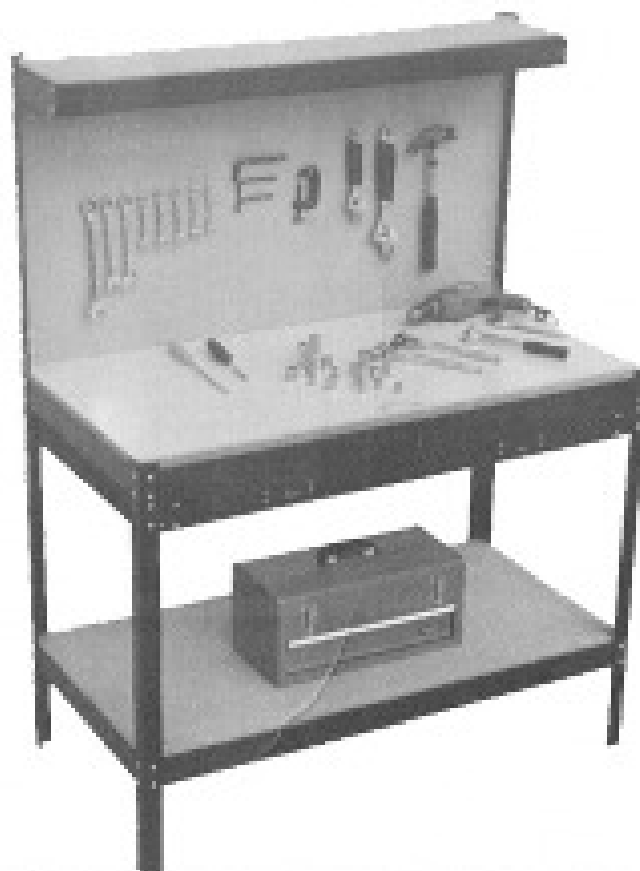


Work Table with Back Board & Drawer

Assembly Instructions



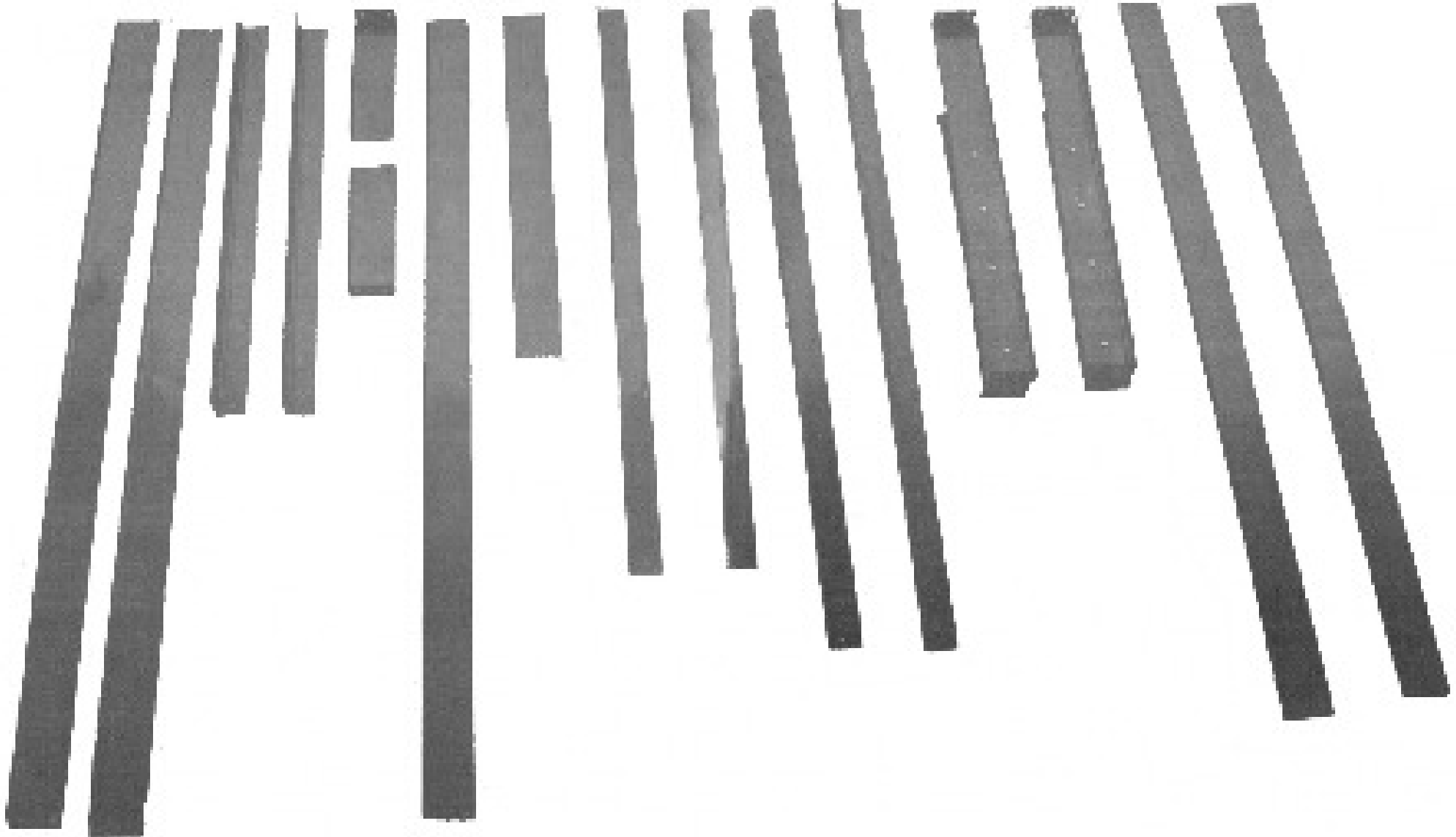
READ THESE INSTRUCTIONS

THIS IS A HEAVY ITEM 32KG, AND ASSEMBLY, TURNING OVER AND MOVING INTO POSITION REQUIRES AT LEAST TWO FIT ADULTS.

**SAFETY WARNING - Heavy Product - 32kg
TEAM LIFT REQUIRED to prevent injury.
DO NOT LIFT ALONE ASK FOR ASSISTANCE**



PRODUCT COMPONENTS



14)Rear cross member A(x1)

15)Rear cross member B(x1)

16)Left holed plate support 650mm(x1)

17)Right holed plate support 650mm(x1)

18)Left top cantilever arm 220mm(x1)

19)Right top cantilever arm 220mm(x1)

20)Cross member 1200mm(x4)

21)Side rail 600mm(x4)

22)Right front leg 900mm(x1)

23)Left front leg 900mm(x1)

24)Left rear leg 1000mm (x1)

25)Right rear leg 1000mm (x1)

26)Left drawer support (x1)

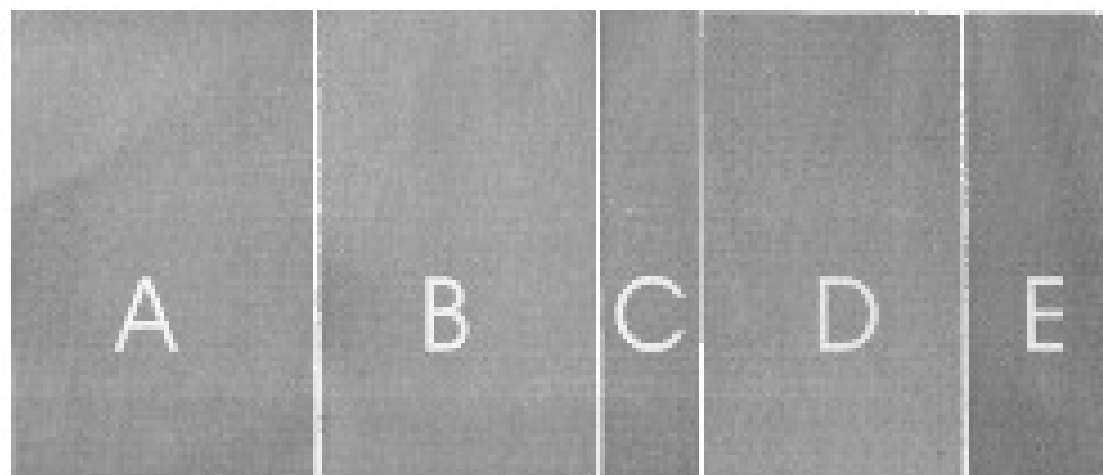
27)Right drawer support (x1)

28)Front drawer support (x1)

29)Rear drawer support (x1)

PRODUCT PARTS

TOOL PLATE ASSEMBLY



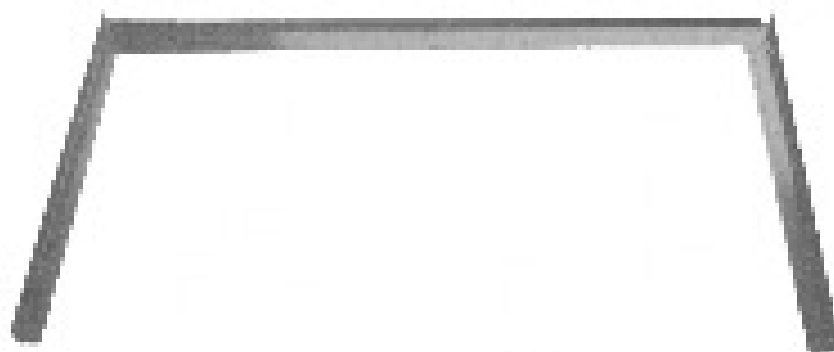
- A) Bottom plate (1200x600x6mm)
- B) Table plate (1200x600x18mm)
- C) Top plate (1200x220x6mm)
- D) Holed plate (1180x605x3mm)
- E) Drawer plate (1090x450x5mm)



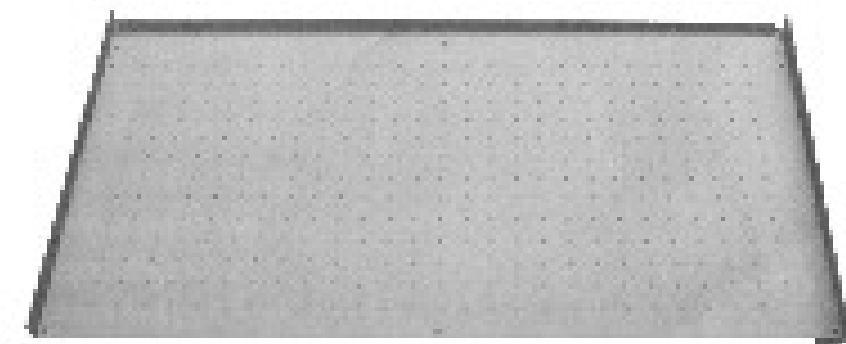
- 1) Bolt M6x14mm (x6)
- 2) Bolt M6x10mm (x62)
- 3) Bolt M4x10mm (x8)
- 4) Wood screw (x4)
- 5) Nut M6 (x68)
- 6) Nut M4 (x8)
- 7) Disc M6 (x68)
- 8) Disc M4 (x8)
- 9) Tool hooks for holed plate (x20)
- 10) Drawer handles (x2)
- 11) Plastic protector (x4)



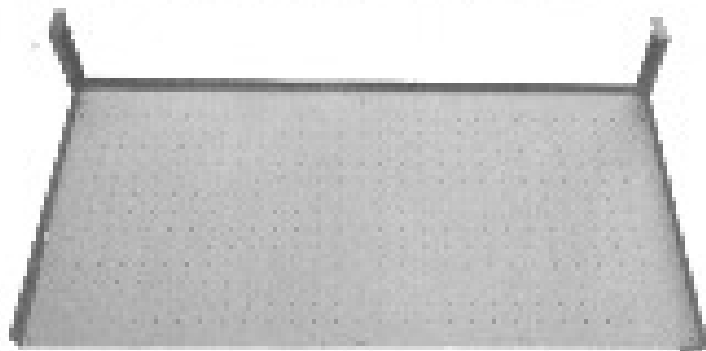
1) Place the right and left holed plate support (16) and (17) on a level surface.



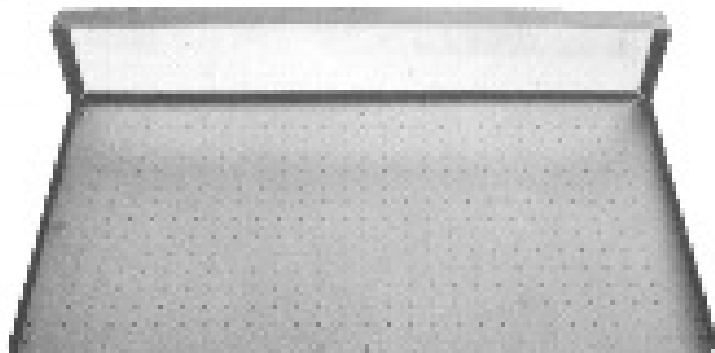
2) Mount rear cross member B (20) between the holed plate supports.



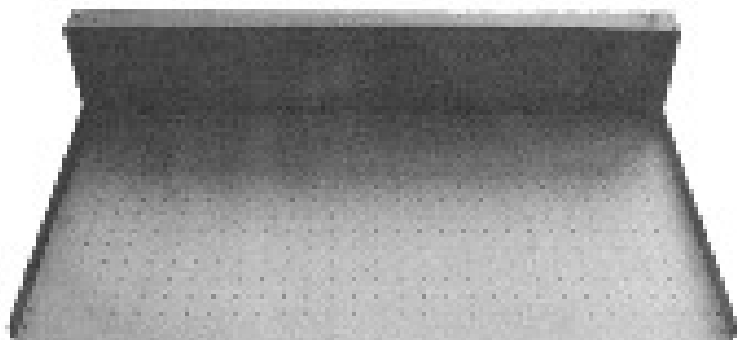
3) Use M6 10mm bolts to fasten the holed plate to the frame.



4) Position the right and left cantilever arms (17) and (18) in the corners of the frame.



5) Mount a cross member (15) between the two top cantilever arms.

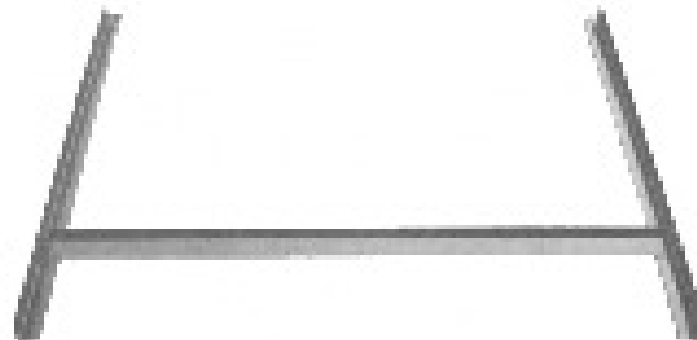


6) Mount the top plate on top of the frame using the wood screws.

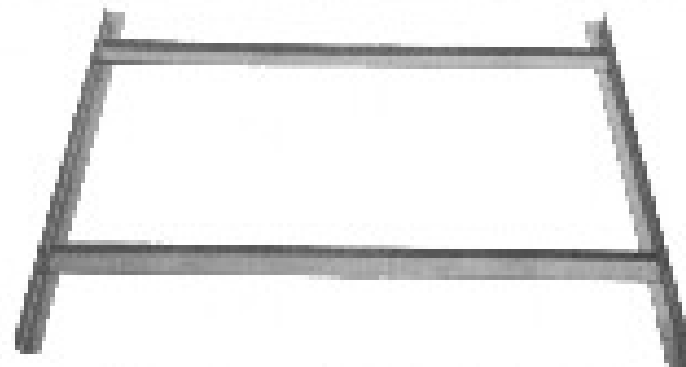
WORK STATION ASSEMBLY



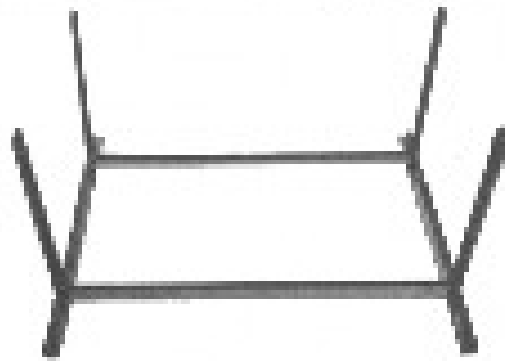
7) Place left and right rear legs (24) and (25) on a level surface.



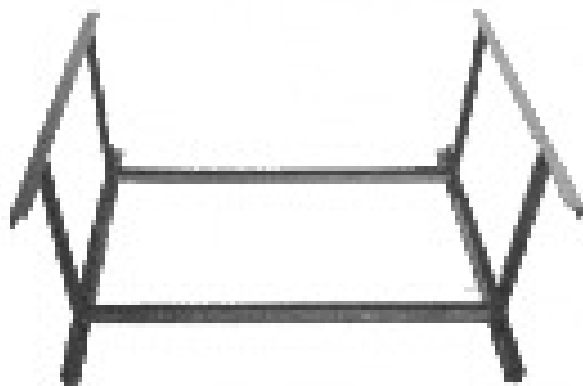
8) Connect the two rear legs with a cross member (20)



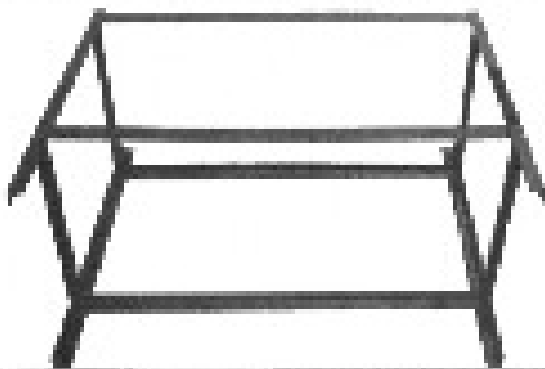
9) Mount another cross member (14) at the top of the legs.



10) Place the four side rails(21) on the rear legs.



11) Place the left and right front legs (23) and (22) on the side rails.



12) Mount two cross members(20) bwtween the front legs.

DRAWER ASSEMBLY



13) Place left and right drawer supports (26) and (27) on a level surface.



14) connect the two side drawer support with rear drawer support (29).



15) Mount front drawer support (28)



16) Fasten the drawer plate (E) and drawer handles(10)



17)Mount the assembled drawer on the table.



18) Place the bottom plate(A) and table plate(B) on the work bench.