

RHYAS HOME CARE



1400w-20L Wet & Dry Vacuum Cleaner

RHYAS

THE PRODUCTS OF CHOICE



1400W VACUUM 53360



RHYAS HOME CARE

RHYAS

THE PRODUCTS OF CHOICE

Thank you for purchasing your Rhyas Home Care product which we hope will give many years of service.

All Rhyas products are covered by a 12 month return to site warranty to our own in-house service department.

We carry stocks of all major parts and a full range of accessories.

Rhyas 1400w 20L Wet & Dry Vacuum Cleaner Specifications:-

Power:-1400w Motor 230v 50Hz

Weight:- 6.5kg

Size:- 355 diameter x 510H

Cable Length:- 4m



Warranty Registration form

Name _____

Address _____

Tel _____

Email _____

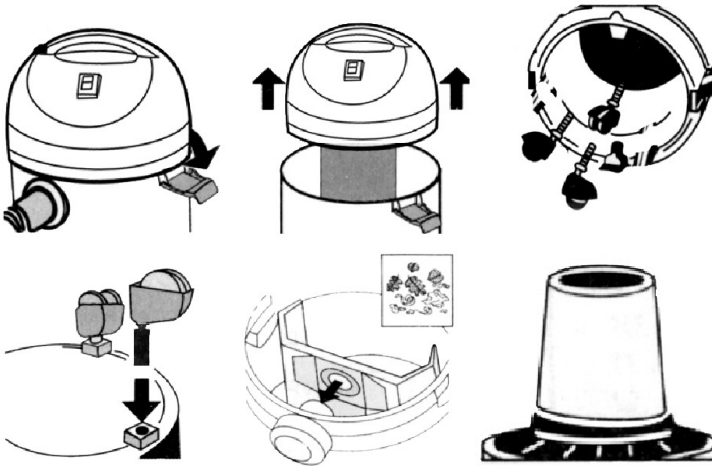
Date of purchase _____

Where purchased _____

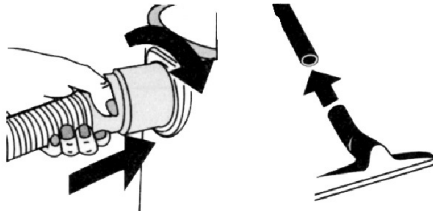


Prior to first use:-

- Remove the top of the vacuum where the wheels and accessories are stored for transit and remove.
- Attach casters to base
- Select whether to use in wet or dry mode:-
Dry Mode - insert dust bag as shown
Wet Mode - remove dust bag and ensure sponge filter is placed over suction head.



- Then attach main hose and cleaning head; your vacuum is ready to use.



- Your vacuum also has the additional feature of a blow facility. This is utilised by removing the suction hose from the air in-let and attaching to the air out-let.



RHYAS HOME CARE

Customer care Line:- 01568 620444

DECLARATION OF CONFORMITY

The following EU Directives are covered by this declaration:-

Low Voltage Directive: 2006/95/EC

The following product is covered by this declaration:-

Wet & Dry Vacuum 53360-YS1400C-20L

The product identified above complies with the requirements of the stated EU Directives by meeting the following standards:-

EN 60335-2-2:2003+A1:04+A2:06

EN 60335-1:2002+A11, A1:04+A12, A2:06+A13:08

EN 62233:2008

The documentation required to demonstrate the above are available for inspection.

The CE mark was first applied in 2009.



Signed: A M Riga

A handwritten signature in black ink, appearing to read 'A M Riga', written over a light blue horizontal line.

Authority: Director

Date: January 2011

Rhyas Products, Unit A Southern Ave, Leominster. HR6 0QF

UK. Subject to change.

Document Ref: 1400w 20L Wet & Dry Vacuum Cleaner.

Product code: 53360

Copyright: These instructions are the sole property of Rhyas and may not be reproduced.