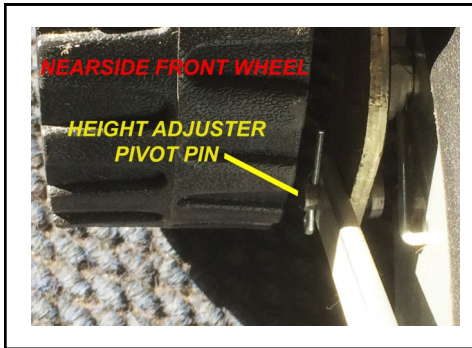


RHYAS GT22SP and GT22SPE -Front Height Adjustment Link Arm Pivot Pin

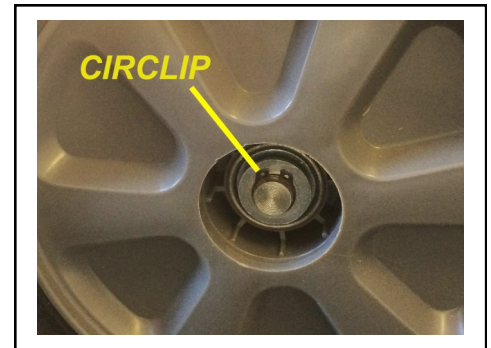
In the event that the height link arm pivot pin requires replacement please follow the instructions:-



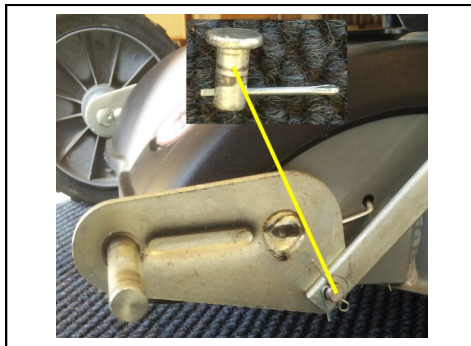
LOCATION OF FRONT PIVOT PIN ARM



REMOVE WHEEL DUST COVER



REMOVE THE CIRCLIP WITH EXTERNAL CIRCLIP PLIERS TO RELEASE THE WHEEL



INSERT PIVOT PIN THROUGH THE FRONT WHEEL AXEL PLATE AND THROUGH THE HEIGHT LEVER INSERT RETAINING SPLIT-PIN AND OPEN.

RE-ATTACH WHEEL AND INSERT DUST COVER